

NOTES

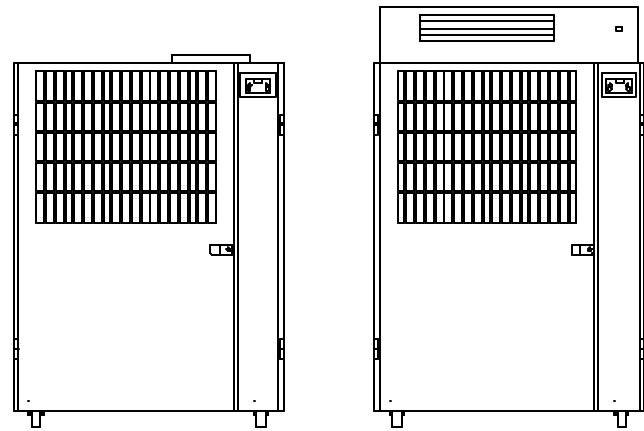
This manual describes the unit features and explains how to set-up, operate and maintain these AirPac Models.

COOLIT3000

COOLIT3300

COOLIT3600

COOLIT3900



THANK YOU!

Thank you for choosing the AirPac COOLIT3000 Series of portable air conditioners. AirPac is a solutions-based manufacturer dedicated to the development of high-performance air conditioners.

Read This Manual! This manual describes the unit features and explains how to set-up, operate and maintain your COOLIT3000 Model.

We want to hear from you! If you have comments or suggestions on how to improve the COOLIT3000 please let us know. Our most important source of information for product improvement is from our customer base. We count on you to continually challenge us at AirPac to build a better air conditioner. We would like to hear from you. Please give us a call at 540-635-5011 or email us, coolit3000@airpacinc.com.

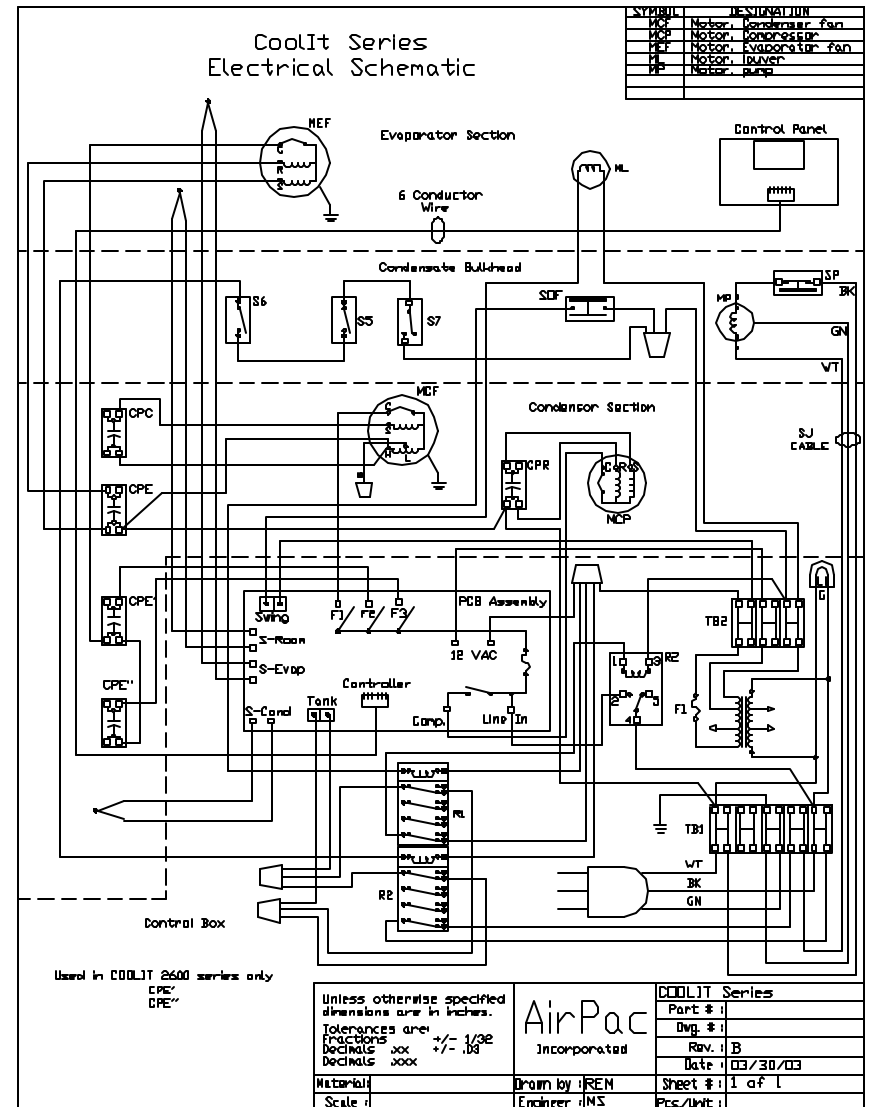
What are you cooling? AirPac's marketing department would love to hear just what you are cooling with your COOLIT3000. Email a short narrative and a picture to MGA@airpacinc.com and we just may publish your story on AirPac's web site.

WARNING: Describes precautions that should be observed in order to prevent injury to the user during installation

CAUTION: Describes precautions that should be observed in order to prevent damage to the unit or its components, which may occur during installation or unit operation if proper care is not exercised.

NOTE: Provides additional information that facilitates unit operation.

WIRING DIAGRAM



SPECIFICATIONS

COOLIT3000 Technical Specifications	
Cooling Capacity	28,000 BTU/h
Power Source	208/230/1 60 HZ
Rated Current	20 Amps
Power Input	3200 Watts
Compressor Type	Reciprocal
Air Flow	900 Low / 1100 Hi CFM
Condensate Tank Size	2 tanks, 2.5 Gallons Each
Sound Level	58 dB
Physical Dimensions	36"W x 24"D x 48"H
Net Weight	345 lbs
Shipping Weight	365 lbs

TABLE OF CONTENTS

Introduction	1
Equipment Check List	2
Inspection of Equipment	3
Installing COOLIT3000	4
Unit Overview	5
Control Panel Functions	9
Air Discharge	11
Removing the Condensate	13
Maintaining the Unit	15
Troubleshooting Guide	17
Warranty	18
Specifications and Wiring Diagram	19

INTRODUCTION

Features All models The versatility of the COOLIT3000 series makes it adaptable for cooling various applications. All models in the COOLIT3000 series are designed to automatically adjust room temperature, reduce moisture and filter room air.

The COOLIT3000 series is manufactured with quality materials and designed to give you many years of reliable, trouble-free service. The COOLIT3000 series features:

- 28,000 BTU/h
- 208/230/1/60, 16 Amps
- Two 2.5 gallon condensate tanks
- Programmable thermostat with optional infra-red, hand held remote control
- Internal condensate pump with 15' head, wired and piped
- Automatic unit shutdown in the event of condensate pump failure
- Maintained cooling cycle—even when tanks are full or being emptied
- Tank sensors to indicate tank fault
- Four swivel casters
- Key locking cabinet access doors
- Attractive secure cabinet design with no visible screws or rivets
- Powder coated 16 gauge sheet metal panels
- 2" stainless steel filter rack to accept various filter media
- Stainless steel evaporator condensate drain pan
- Fully insulated cabinet
- Remote Control (optional)

COOLIT3300

- Discharge (cool air) Plenum with Oscillating Louvers
- Flexible Duct for Condenser Air - reaches 10' ceiling
- Ceiling Panel with Duct Collar and Tension Spring

COOLIT3600

- Condenser Air Make-up Plenum with Duct

COOLIT3900

- Condenser Air Window Kit

WARRANTY INFORMATION

Limited Warranty AirPac warrants to its authorized distributor or end-user, each new COOLIT3000, to be free from defects in material and workmanship for a period of one (1) year from date of purchase. The sole obligation of AirPac under this warranty will be to furnish, without charge, a replacement part for a defective part.

This warranty does not include installation, transportation, or postage costs associated with installing the replacement part. This warranty does not apply to equipment that has been damaged by accident, negligence, or misapplication or has been altered or modified in any way. This warranty only applies to the original purchaser.

In order for this warranty to become effective, the warranty registration card, delivered with the unit, must be completed and returned to AirPac within 30 days of purchase and delivery. Any claim under this warranty should be first presented to and processed by the authorized distributor from whom the equipment was purchased.

To the extent permitted by law, this warranty is expressly in lieu of any other warranties, either expressed or implied, made by AirPac, Incorporated. AirPac assumes no liability in any event for lost profits or revenue, loss of equipment, loss of use of equipment, loss of software, loss of data, costs of substitutes, claims by third parties, or otherwise. This warranty gives you specific legal rights and you may also have other rights, which may vary from state to state.

TROUBLE SHOOTING GUIDE

PROBLEM	CAUSE	SOLUTION
Unit does not work	Unit not plugged in.	Plug in power cord.
	No power at the receptacle.	Check fuse or circuit breaker.
	Water tank full.	Empty water tank.
Poor cooling performance	Wrong function mode selected.	Set in correct function mode.
	Condenser air exhaust or intake blocked.	Clear all objects from air grills, move away from wall.
Unit operates but is not cooling	Compressor has not yet started.	Wait 3 — 5 minutes for time delay to elapse.
	Temperature selection incorrectly set.	Adjust temperature setting.
Compressor stops running after a short time	Voltage is insufficient.	Correct input power.
	Unit is plugged into an extension cord.	Remove extension cord.
Water is leaking	Drain tube clogged.	Remove blockage.
	Water tank improperly seated.	Reposition tank.
	Damaged water tank.	Replace tank.
Unit making noise	Unit is not level.	Make sure operating surface is level.
	Water draining into tank.	This is normal.
Unit works but is not cooling the room enough.	The BTU load in the room is greater than 28,000 BTU.	Need more cooling. Add another COOLIT.
Unit making beeping noise and tank full LED flickering. Unit still working	Tank Fault	Close and latch front door, empty tanks, plug tank into socket
Unit making beeping noise and tank full LED flickering. Fans and compressor not working.	Tank Fault	Close and latch front door, empty tanks, plug tank into socket
	Pump Fault	Turn off unit. Clear tank fault and clear pump fault

EQUIPMENT CHECK LIST

COOLIT3000 and 3300

The first step in preparing the COOLIT3000 for installation is to run through this check list to ensure you have all the pieces necessary for your installation.

You have located this manual so you are on the right track! The enclosed pencil is the only tool you will need to get your COOLIT3000 up and running. Your shipment consists of one box:

Each COOLIT3000 and COOLIT3300 series unit box contains:

- COOLIT3000 or COOLIT3300
- Two 2.5 Gallon Condensate Tanks
- Internal Condensate Pump
- 8' Vinyl Tubing for Condensate Pump
- COOLIT3000 Series Operation Manual
- COOLIT3000 Series Warranty Card
- Plenum with Oscillating Louvers (3300 model)
- Flexible Duct for Condenser Air (3300 model)
- Ceiling Panel with duct collar and spring (3300 model)
- Remote Control (optional)

NOTE:

Before installing and operating your COOLIT3000 unit please read the instructions carefully to ensure maximum benefit from your portable air conditioner.

INSPECTION OF EQUIPMENT

Receiving Your COOLIT All COOLIT3000 models are shipped on pallets in sturdy packaging. The integral condenser air exhaust system (optional) and condensate pump are internal to the unit and do not require separate shipping cartons.

Upon receipt of the unit inspect it for any visible or concealed damage. Report any damage to your local AirPac distributor so a damage claim can be processed. It is very important to keep all packaging for inspection by the shipper.

DO NOT OPERATE UNIT.

CAUTION: If you have shipping damage keep all packaging for inspection by the shipper. **DO NOT OPERATE UNIT.**

Safety Precautions

The instructions stated in this booklet are written for the user's safety and must be followed closely. Use of this unit in any other manner may create a hazard for the user and others nearby. Failure to follow these instructions may damage unit and void the warranty.

WARNING: Describes precautions that should be observed in order to prevent injury to the user during installation

CAUTION: Describes precautions that should be observed in order to prevent damage to the unit or its components, which may occur during installation or unit operation if proper care is not exercised.

NOTE: Provides additional information that facilitates unit operation.

WARNING: To reduce risk of fire or electric shock do not expose unit to rain or moisture. Do not open cabinet while unit is connected to a power source. Dangerous voltage is present. Have repairs performed by certified HVAC technicians.

MAINTAINING THE UNIT *continued*

Clean the Cabinet Turn off the unit and unplug it from the electrical outlet. To clean the surface of the cabinet use warm water and a neutral, non-abrasive detergent. Ensure all detergent is wiped from the surface and rinse with clear water so there is no detergent residue on the cabinet.

CAUTION: DO NOT clean the surface with thinners, alcohol, polishing powder, alkaline detergent, acid or an abrasive brush. Using these items could scratch and damage the cabinet.

MAINTAINING THE UNIT

General Maintenance

Your COOLIT3000 is designed for easy maintenance. Performing routine preventive maintenance will ensure you enjoy years of trouble-free operation and keep your unit running at peak efficiency.

Before any maintenance make sure the unit has stopped running and unplug the unit from the electrical outlet.

Clean the Air Filters

The air filters will accumulate dust and dirt when operating in the cooling and fan functions. It is important to keep the filters clean so the air flow is not restricted and cooling is optimized. To clean filters:

Evaporator Filters

1. Open front door of the unit.
2. Remove the filter and clean or replace. Filters shipped with the unit can be cleaned with water.
3. Replace the filter with new or cleaned filter.
4. Close the front door and resume operation.

Condenser Filters

1. Open back door of the unit.
2. Remove the filter by cutting the plastic tie wrap, clean or replace filter.
3. Close the front door and resume operation.

Clean the Condensate System

Turn off the unit and unplug it from the electrical outlet. Clean the interior of each tank to avoid growth of mold and mildew. Flush the tank with a solution of warm water and mild detergent before storage.

Before storage or shipping—Operate the unit in fan mode for minimum of 30 minutes. Turn off and let stand for 1 hour to allow all condensate to drain off coil. Remove tanks and empty water. Remove condensate pump and dump out all water in pump reservoir. Separate pump from reservoir and wipe inside dry.

INSTALLING COOLIT3000

Set up Your COOLIT

1. *Remove COOLIT packaging.*

Unpack and inspect the unit for visible shipping damage. If you find shipping damage, **DO NOT OPERATE THE UNIT.** Keep all packaging.

CAUTION: If using an extension cord: extension cord must be rated at least 20 amps, at 250 volts and have a grounding type attachment plug connector (load fitting).

2. *Remove COOLIT from skid.*

The COOLIT is immobilized on the skid by eight wooden blocks. Each block is secured with two screws. Remove the screws from each of the blocks and remove the blocks. Now slide the COOLIT3000 to the side to remove the unit from the skid.

Check out Your COOLIT

3. *Place the unit on a flat, solid surface.*

Operation on uneven surfaces may cause vibration, noise and possible water leakage from condensate system.

4. *Check that the condensate water tanks are in place and properly seated.*

If the condensate tank is not installed properly the unit will not operate. The COOLIT has a unique condensate removal system that is integral to the unit. Refer to the *Automatic Condensate Draining* section on page 13 to use this feature.

Power Your COOLIT

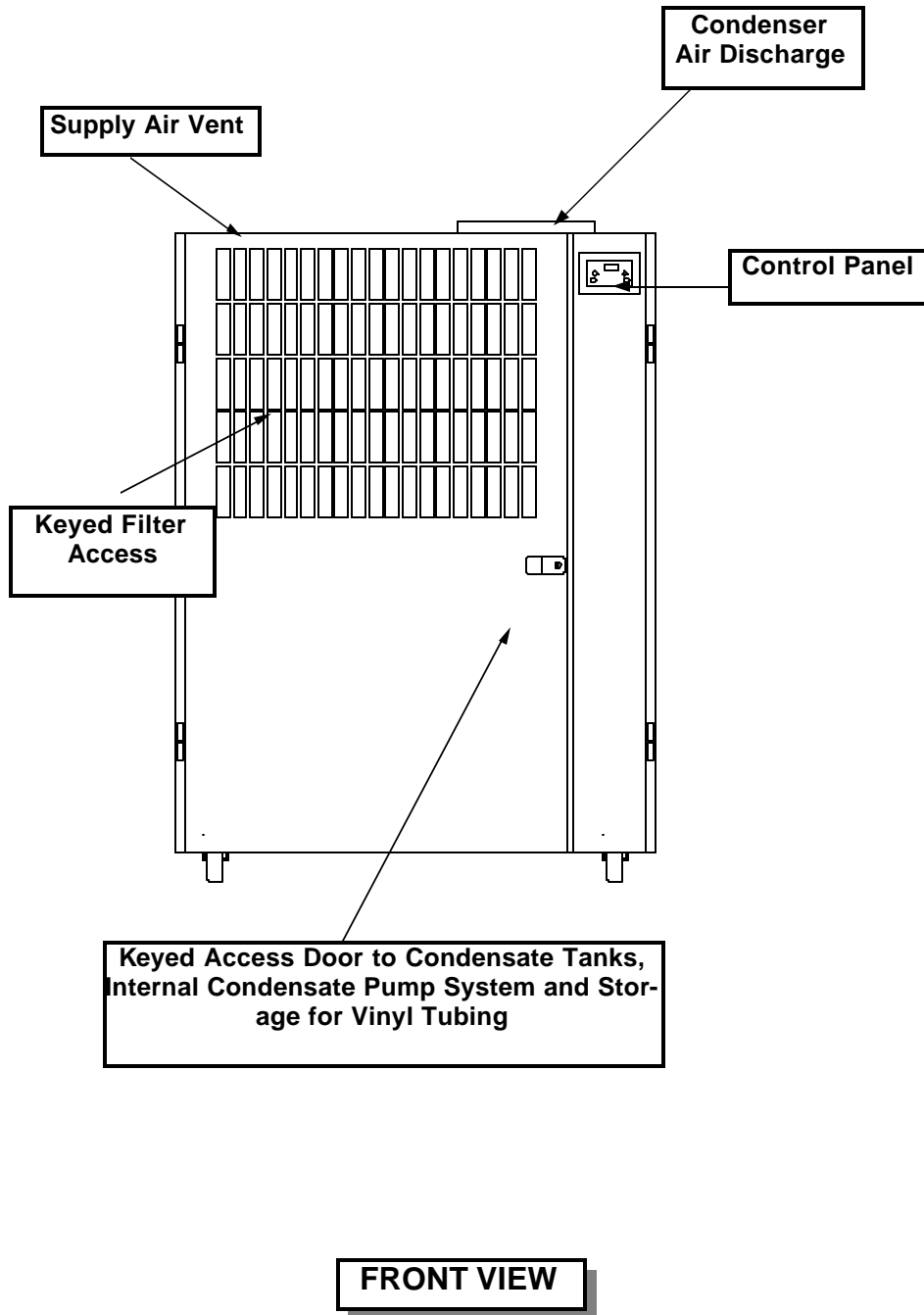
5. *Plug COOLIT unit into a NEMA L6-20 outlet.*

Remove cord from cord storage area. Plug unit directly into the appropriate wall outlet.

Do not plug COOLIT into extension cord. When power is applied to the unit, the LED display will read "OFF". There will be a small LED light coming from behind the access door to indicate voltage is being applied to the unit.



UNIT OVERVIEW—COOLIT 3000



REMOVING THE CONDENSATE *continued*

Automatic Condensate Draining

If it is necessary to operate the COOLIT3000 continually without threat of automatic shut-off and loss of cooling when tanks are full, you will need to utilize the integral condensate pump option. Selecting the automatic condensate pump method is a snap.

1. Open the front door of the COOLIT3000.
2. Locate the red vinyl tube attached to the condensate pump.
3. Disconnect the red vinyl tube at the barbed connector to the condensate pump. Connect the vinyl tube (8' provided) to barbed fitting of the condensate pump. Direct the other end of the tubing through the unit to your drain connection.
4. Depending on the length of your drain line, you may need to add more tubing or soft copper tubing depending on the building codes in your area. Tubing is 3/8" ID. The condensate pump in your COOLIT3000 has a 15' lift capability. If lift is exceeded, the pump will shut down.



CAUTION: The condensate drain line installation must comply with your local building codes. Consult local building codes before installing the condensate line.

NOTE: Condensate pump and drain installation and maintenance instructions specific to your equipment are included with this manual.

REMOVING THE CONDENSATE

Unequaled Versatility

AirPac's patent-pending condensate removal system is the best in the industry. During cooling operations and when humidity conditions are above 50%, condensate is generated and must be removed from the unit. Our condensate removal system is selectable in the field and can be changed as your cooling needs require. You can select from the following three methods:

TANKS—Condensate is collected into the tanks. When the tanks are full the water must be emptied.

AUTOMATIC—Condensate is pumped from the pump reservoir through a vinyl tube out of the unit to a drain.

Manual Tank Draining

GRAVITY—Condensate drains from the unit by flow of gravity to a drain outside of unit.

The condensate pump is wired and an operational component in the condensate drain system, whether you select to use the manual tank draining system or automatic removal method.

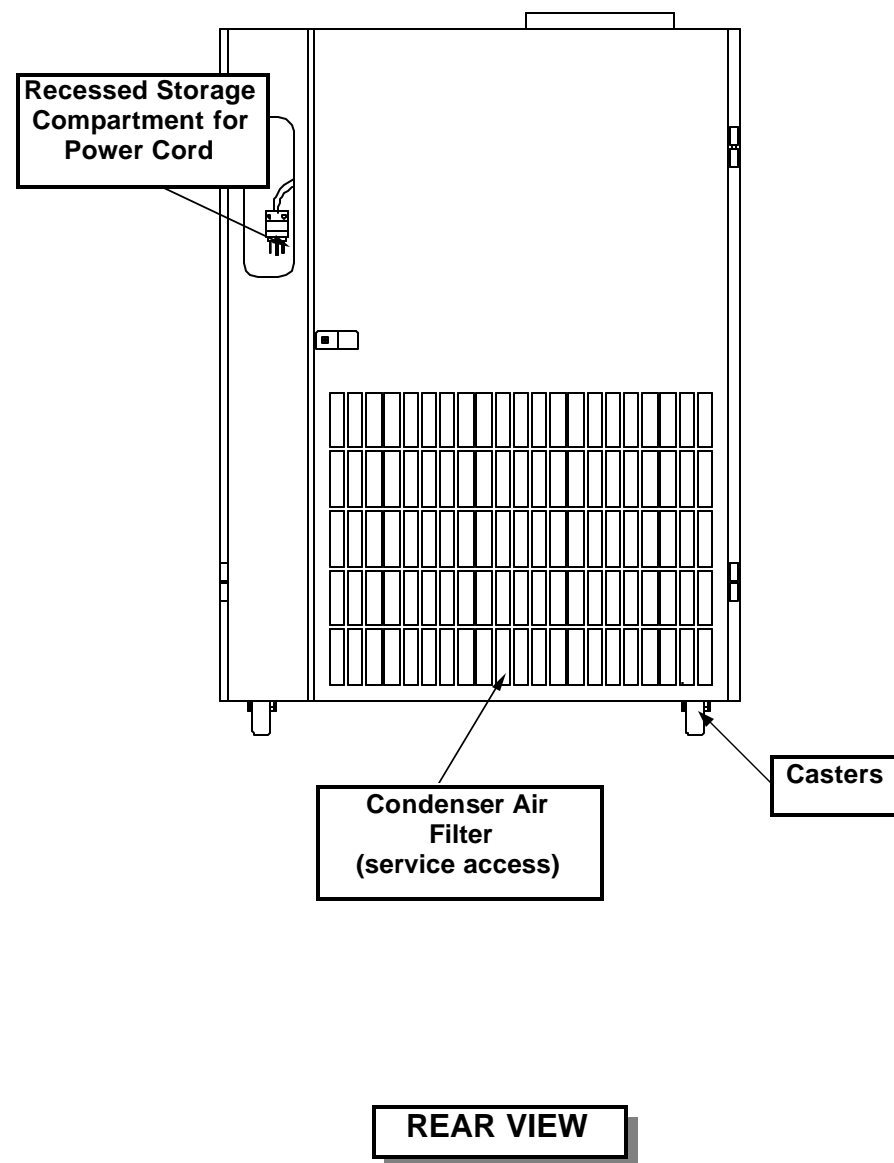
The COOLIT3000 leaves the factory ready for manual tank draining.

1. The dual tanks will fill up at approximately the same rate. When the dual 2.5 gallon condensate tanks are full, the TANK FULL alarm will flicker and an audible alarm will beep. Open the front door and remove the plug from the socket for each condensate tank.
2. Empty the tanks and replace the tanks and plugs back into sockets. They only fit one way.
3. Close the door. The tank full alarm should clear.

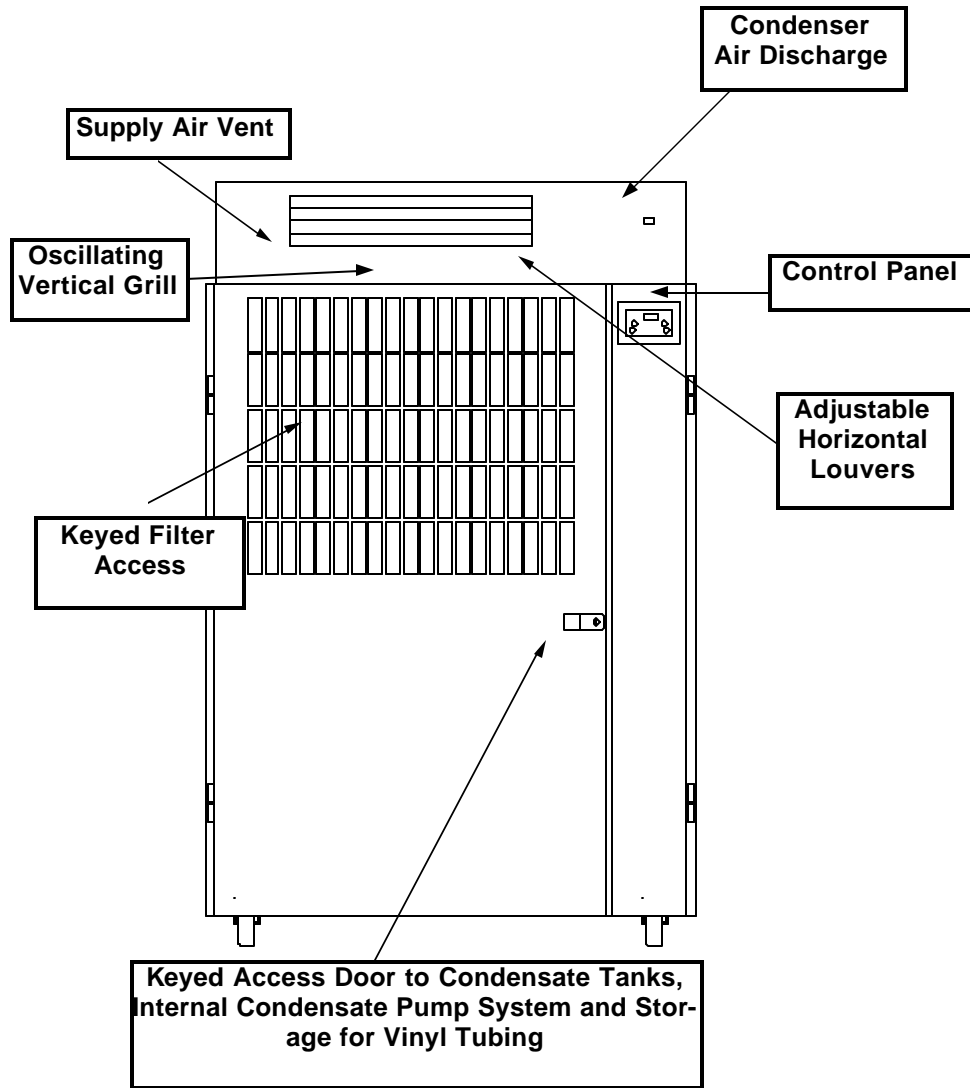
You may find that your COOLIT3000 continues to operate while you are emptying the condensate tanks. This is normal. When the condensate pump reservoir reaches the full level, power to the compressor and fans shut off so condensate does not overflow. The tank full alarm will activate too.

NOTE: TANK FULL alarm. Flickers and beeps on any of these conditions: front door open—not latched; tank(s) full; tank plug not in place; or condensate pump emergency shut off (fans and compressor are disabled). Turn unit off, clear tank fault, and restart normal operation.

UNIT OVERVIEW—COOLIT 3000



UNIT OVERVIEW— COOLIT 3300



FRONT VIEW

AIR DISCHARGE COOLIT 3300



Place Ceiling Adapter into the ceiling grid.



Extend duct and fit collar into opening.

AirPac's unique patent-pending air discharge design is integral to the COOLIT3300 and requires no assembly. The duct section compresses into the cabinet. The integral ducting system is typically used to duct exhaust (condenser) air into the ceiling plenum or out through a window panel.

- The Ceiling Panel stores behind the service door (rear door). The Ceiling Panel will replace a 24" x 24" drop ceiling tile and is convenient for temporary and emergency installations requiring exhaust into a ceiling plenum. Check with local building codes to see if your building will accept this type of exhaust.
- Move a ceiling tile out of the grid and replace it with the Ceiling Panel. Make sure the ceiling panel is positioned properly in the ceiling grid and cannot fall out. There should be at least 18 - 24" of open space above the ceiling panel outlet so exhaust air is not blocked.
- Slowly lift the warm air duct from the top of the unit. Press in on both sides of the tension spring and fit the collar into the Ceiling Panel. Once the hooks of the spring are above the Ceiling Panel release the tension spring. The collar and duct should stay up in place.

COOLIT 3600 and COOLIT 3900 users

Follow instructions provided with Condenser Air Make-up Plenum and Condenser Air Window Kit .

AIR DISCHARGE

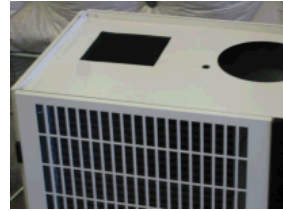
Distributing or ducting air on COOLIT 3000

Air discharge is on the top of the unit. The square opening is the discharge for the evaporator (cool) air and the round opening is for the condenser (warm) air discharge. By using flanges and duct work (supplied by others) your COOLIT 3000 can be made into a versatile stand alone air conditioning system.

Recommended duct sizes:

8~10" Evaporator

12" Condenser



Warm air exhausts from the top of the unit when operating in cooling mode as an air conditioner. The COOLIT3000 will cool more efficiently if the warm air is removed from the area.

CAUTION:

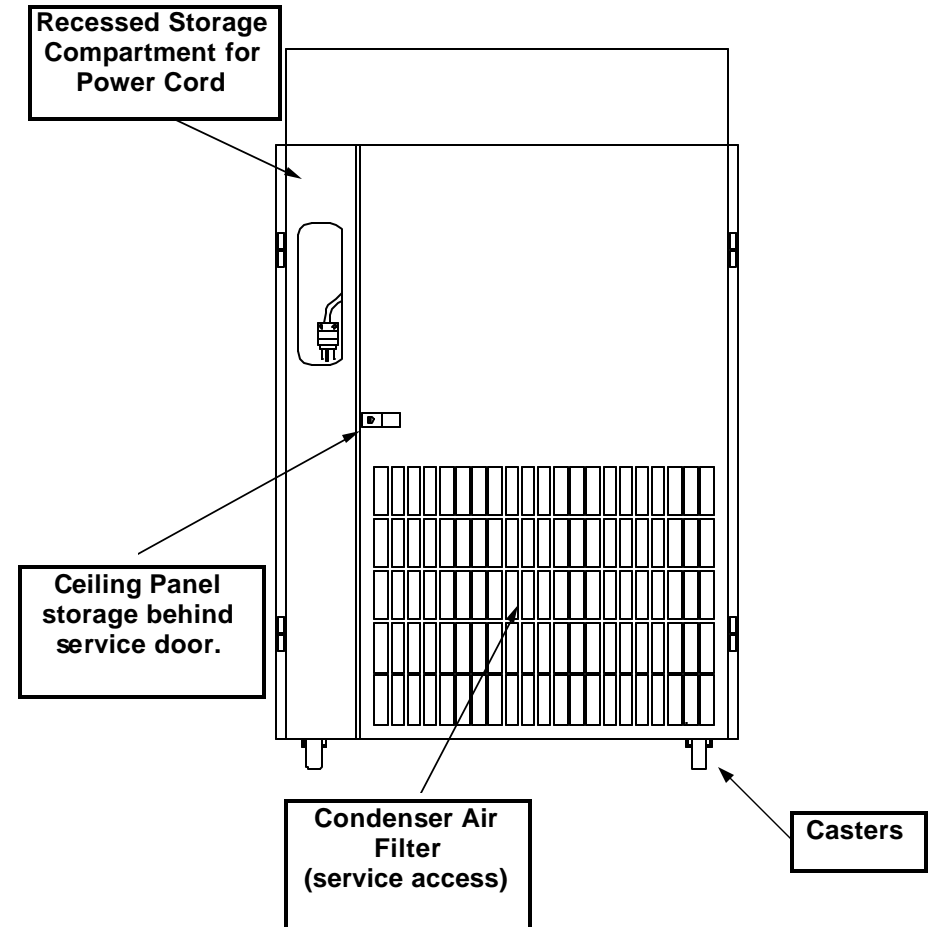
When using flexible duct . Flexible duct is convenient and typically has a high compression ratio, however it can also greatly restrict air flow when improperly sized or installed. Observe all warnings and instructions when using flexible duct. If air flow is restricted possible effects are automatic shut or damage to your system.

Distributing air on the COOLIT 3300

The COOLIT3300 distributes cool air through a louvered plenum mounted on top the unit. The horizontal blades can be manually adjusted. The vertical blades can be made to oscillate through the switch above the control pad.

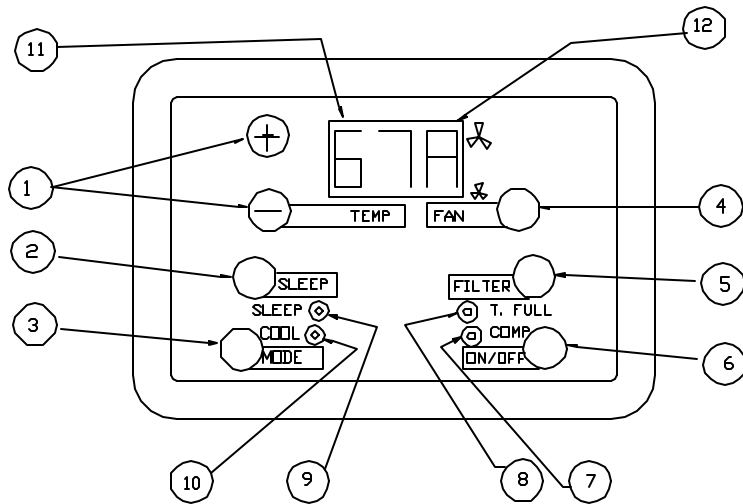


UNIT OVERVIEW– COOLIT 3300



REAR VIEW

CONTROL PANEL FUNCTIONS



1. **(TEMP)** Push-buttons to set desired temperature, (+) for set point higher and (-) for set point lower. Range is 60° to 85°F. Continuous pressing of 2 push buttons simultaneously for instant display of ambient (return) air temperature. While display is blinking by pressing the (+) button once to read the condenser coil temp (does not display leading "1"). Press the (+) again to read the evaporator coil temp. Display will return to normal after blinking stops.
2. **(SLEEP)** Push button to start sleep program. Timer that will raise the set point temperature by 4°F after two hours. After 8 hours, the normal set point temperature setting will resume.
3. **(MODE)** Push button to select operation mode: Cool, Dry, Ventilation (fan only)
4. **(FAN)** Push button to select fan speed: Low, High, Automatic mode
5. **(FILTER)** Push button resets operation timer to zero. "FIL" appears in display after 250 hours of operation time. A reminder to clean or change your filter.
6. **(ON/OFF)** Push button for complete start and stop of the system
7. **LED—Compressor:** Steady light when compressor is on, flickering indicate 3.5 minute count down to compressor start up.
8. **LED—Tank Full:** Condensate alarm. Flickers and beeps on any of these conditions: front door open—not latched; tank(s) full; tank plug not in place; or condensate pump emergency shut off (fans and compressor are disabled). Turn unit off, clear tank fault, and restart for normal operation.

CONTROL PANEL FUNCTIONS

Control Panel 9. **LED—Sleep:** Steady light when Sleep program is selected.

10. **LED-COOL :** Steady light when COOLING mode is selected by pressing the MODE button. Flickering indicates timer program activated by remote control (optional).

11. **LED –Display:** Left and center digit displays desired temperature or operational temperatures when flickering.

12. **LED—Display:** Right digit displays indoor fan status. Low line for low speed, high line for high speed. "A" in display means alternating fan speed according to the temperature.

Additional displays and features:

__F— Ventilation mode selected. Left digit "F" is displayed.

D__ - Drying mode selected. Right digit "D" is displayed.

ER1—communication failure between controller and board

ER2—Short or open circuit of the room sensor

ER3—short or open circuit of either coil sensor

FIL—Reminder to clean or change filters every 250 hours

OFF—System off. Ready for input.

BLANK—No power to system board or controller.

Board and controller are connected with a 6 wire telephone cable. Control panel can be mounted remote up to 50m. Do not cross wires or connectors in telephone cable. Do not disconnect controller from cable without disconnecting power. Memory at power failure or shut down—Restarts system at latest operating mode and set points.

Drying Mode Operation—To reduce humidity. If temperature is above set point temperature: compressor operate continuously. If temperature is at requested temperature: Compressor operates in 8 minutes ON and 4 minutes OFF cycles. If temperature is below set point—compressor cycles 6 minutes on, 6 minutes off. Inside fan at low speed On and Off at 30 second delays .