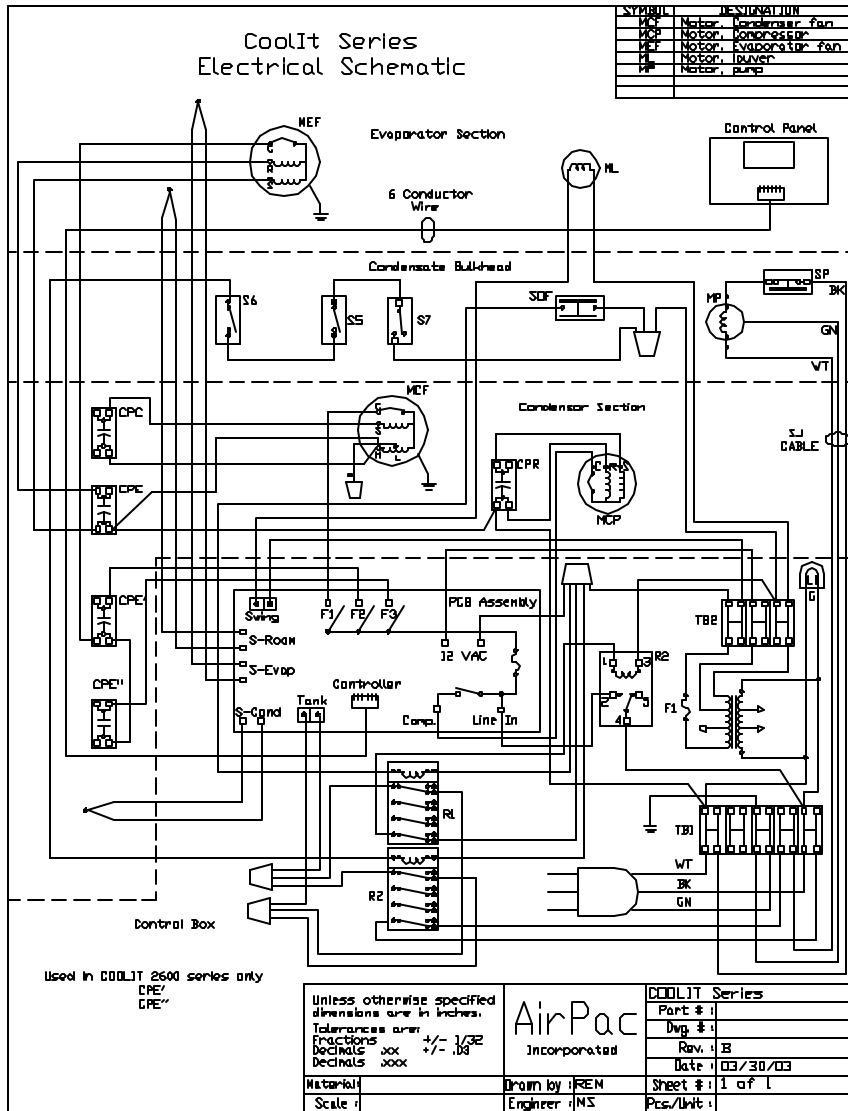


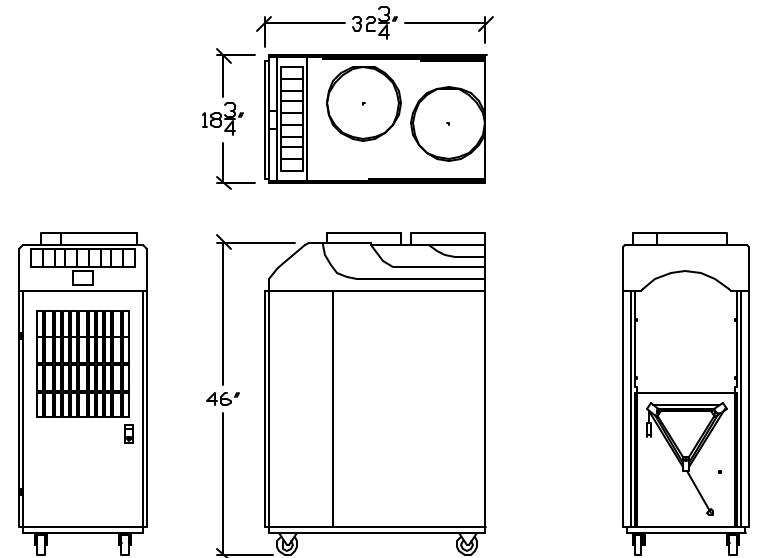
# WIRING DIAGRAM

This manual describes the unit features and explains how to set-up, operate and maintain these AirPac Models.



COOLIT2600

COOLIT2900



## THANK YOU!

*Thank you for choosing the AirPac COOLIT2600 Series of portable air conditioners. AirPac is a solutions-based manufacturer dedicated to the development of high-performance air conditioners.*

**Read This Manual!** This manual describes the unit features and explains how to set-up, operate and maintain your COOLIT2600 Model.

**We want to hear from you!** If you have comments or suggestions on how to improve the COOLIT2600 please let us know. Our most important source of information for product improvement is from our customer base. We count on you to continually challenge us at AirPac to build a better air conditioner. We would like to hear from you. Please give us a call at 540-635-5011 or email us, coolit2600@airpacinc.com.

**What are you cooling?** AirPac's marketing department would love to hear just what you are cooling with your COOLIT2600. Email a short narrative and a picture to MGA@airpacinc.com and we just may publish your story on AirPac's web site.

**WARNING:** Describes precautions that should be observed in order to prevent injury to the user during installation

**CAUTION:** Describes precautions that should be observed in order to prevent damage to the unit or its components, which may occur during installation or unit operation if proper care is not exercised.

**NOTE:** Provides additional information that facilitates unit operation.

## WARRANTY INFORMATION

### Limited Warranty

AirPac warrants to its authorized distributor or end-user, each new COOLIT2600, to be free from defects in material and workmanship for a period of one (1) year from date of purchase. The sole obligation of AirPac under this warranty will be to furnish, without charge, a replacement part for a defective part.

This warranty does not include installation, transportation, or postage costs associated with installing the replacement part. This warranty does not apply to equipment that has been damaged by accident, negligence, or misapplication or has been altered or modified in any way. This warranty only applies to the original purchaser.

In order for this warranty to become effective, the warranty registration card, delivered with the unit, must be completed and returned to AirPac within 30 days of purchase and delivery. Any claim under this warranty should be first presented to and processed by the authorized distributor from whom the equipment was purchased.

To the extent permitted by law, this warranty is expressly in lieu of any other warranties, either expressed or implied, made by AirPac, Incorporated. AirPac assumes no liability in any event for lost profits or revenue, loss of equipment, loss of use of equipment, loss of software, loss of data, costs of substitutes, claims by third parties, or otherwise. This warranty gives you specific legal rights and you may also have other rights, which may vary from state to state.

## TROUBLE SHOOTING GUIDE

PROBLEM	CAUSE	SOLUTION
Unit does not work	Unit not plugged in.	Plug in power cord.
	No power at the receptacle.	Check fuse or circuit breaker.
	Water tank full.	Empty water tank.
Poor cooling performance	Wrong function mode selected.	Set in correct function mode.
	Condenser air exhaust or intake blocked.	Clear all objects from air grills, move away from wall.
Unit operates but is not cooling	Compressor has not yet started.	Wait 3 — 5 minutes for time delay to elapse.
	Temperature selection incorrectly set.	Adjust temperature setting.
Compressor stops running after a short time	Voltage is insufficient.	Correct input power.
	Unit is plugged into an extension cord.	Remove extension cord.
Water is leaking	Drain tube clogged.	Remove blockage.
	Water tank improperly seated.	Reposition tank.
	Damaged water tank.	Replace tank.
Unit making noise	Unit is not level.	Make sure operating surface is level.
	Water draining into tank.	This is normal.
Unit works but is not cooling the room enough.	The BTU load in the room is greater than 13,500 BTU.	Need more cooling. Add another COOLIT.
Unit making beeping noise and tank full LED flickering. Unit still working	Tank Fault	Close and latch front door, empty tanks, plug tank into socket
Unit making beeping noise and tank full LED flickering. Fans and compressor not working.	Tank Fault	Close and latch front door, empty tanks, plug tank into socket
	Pump Fault	Turn off unit. Clear tank fault and clear pump fault

## TABLE OF CONTENTS

Introduction .....	1
Equipment Check List .....	2
Inspection of Equipment .....	3
Installing COOLIT2600 .....	4
Unit Overview .....	5
Control Panel Functions .....	7
Air Discharge .....	9
Removing the Condensate .....	11
Maintenance .....	13
Troubleshooting Guide .....	15
Warranty .....	16
Wiring Diagram.....	17

## INTRODUCTION

### Features All models

The versatility of the COOLIT2600 series makes it adaptable for cooling various applications. All models in the COOLIT2600 series are designed to automatically adjust room temperature, reduce moisture and filter room air.

The COOLIT2600 series is manufactured with quality materials and designed to give you many years of reliable, trouble-free service. The COOLIT2600 series features:

- 13,500 BTU/h
- 115/1/60, 15 Amps
- Two 2.5 gallon condensate tanks
- Programmable thermostat with optional infra-red, hand held remote control
- Internal condensate pump with 15' head, wired and piped
- Automatic unit shutdown in the event of condensate pump failure
- Maintained cooling cycle—even when tanks are full or being emptied
- Tank sensors to indicate tank fault
- Four swivel casters
- Key locking cabinet access door
- Attractive secure cabinet design with no visible screws or rivets
- Powder coated 18 gauge sheet metal panels
- Stainless steel evaporator condensate drain pan
- Fully insulated cabinet
- Discharge (cool air) Plenum with Oscillating Louvers
- Flexible Duct for Condenser Air - reaches 10' ceiling
- Ceiling Panel with Duct Collar and Tension Spring
- Condenser Air Make-up Plenum
- Make up Air Duct Kit (optional)
- Remote Control (optional)

### COOLIT2900

- Condenser Air Window Kit

## MAINTAINING THE UNIT *continued*

**Clean the Cabinet** Turn off the unit and unplug it from the electrical outlet. To clean the surface of the cabinet use warm water and a neutral, non-abrasive detergent. Ensure all detergent is wiped from the surface and rinse with clear water so there is no detergent residue on the cabinet.

**CAUTION:** DO NOT clean the surface with thinners, alcohol, polishing powder, alkaline detergent, acid or an abrasive brush. Using these items could scratch and damage the cabinet.

COOLIT2600 Technical Specifications	
Cooling Capacity	13,500 BTU/h
Power Source	115/1 60 HZ
Rated Current	15 Amps
Power Input	Watts
Compressor Type	Rotary
Air Flow	Low / Hi CFM
Condensate Tank Size	2 tanks, 2.5 Gallons Each
Sound Level	52 dB
Physical Dimensions	18-1/2"W x 32-3/4"D x 45"H
Net Weight	210 lbs
Shipping Weight	240 lbs

## MAINTAINING THE UNIT

### General Maintenance

Your COOLIT2600 is designed for easy maintenance. Performing routine preventive maintenance will ensure you enjoy years of trouble-free operation and keep your unit running at peak efficiency.

Before any maintenance make sure the unit has stopped running and unplug the unit from the electrical outlet.

### Clean the Air Filters

The air filters will accumulate dust and dirt when operating in the cooling and fan functions. It is important to keep the filters clean so the air flow is not restricted and cooling is optimized. To clean filters:

#### Evaporator Filters

1. Open front door of the unit.
2. Remove the filter and clean or replace. Filters shipped with the unit can be cleaned with water.
3. Replace the filter with new or cleaned filter.
4. Close the front door and resume operation.

#### Condenser Filters—(Not standard)

1. Reach into the condenser supply area.
2. Remove the filter and clean or replace.

### Clean the Condensate System

Turn off the unit and unplug it from the electrical outlet. Clean the interior of each tank to avoid growth of mold and mildew. Flush the tank with a solution of warm water and mild detergent before storage.

Before storage or shipping—Operate the unit in fan mode for minimum of 30 minutes. Turn off and let stand for 1 hour to allow all condensate to drain off coil. Remove tanks and empty water. Remove condensate pump and dump out all water in pump reservoir. Separate pump from reservoir and wipe inside dry.

## EQUIPMENT CHECK LIST

**COOLIT2600** The first step in preparing the COOLIT2600 for installation is to run through this check list to ensure you have all the pieces necessary for your installation.

You have located this manual so you are on the right track! The enclosed pencil is the only tool you will need to get your COOLIT2600 up and running. Your shipment consists of one box:

Each COOLIT2600 unit contains:

- COOLIT2600
- Two 2.5 Gallon Condensate Tanks
- Internal Condensate Pump
- 8' Vinyl Tubing for Condensate Pump
- COOLIT2600 Series Operation Manual
- COOLIT2600 Series Warranty Card
- Plenum with Oscillating Louvers
- Flexible Duct for Condenser Air
- Ceiling Panel with duct collar and spring
- Remote Control (optional)

#### NOTE:

Before installing and operating your COOLIT2600 unit please read the instructions carefully to ensure maximum benefit from your portable air conditioner.

## INSPECTION OF EQUIPMENT

**Receiving Your COOLIT** All COOLIT2600 models are shipped on pallets in sturdy packaging. The integral condenser air exhaust system (optional) and condensate pump are internal to the unit and do not require separate shipping cartons.

Upon receipt of the unit inspect it for any visible or concealed damage. Report any damage to your local AirPac distributor so a damage claim can be processed. It is very important to keep all packaging for inspection by the shipper.

**DO NOT OPERATE UNIT.**

**CAUTION:** If you have shipping damage keep all packaging for inspection by the shipper.  
**DO NOT OPERATE UNIT.**

### Safety Precautions

The instructions stated in this booklet are written for the user's safety and must be followed closely. Use of this unit in any other manner may create a hazard for the user and others nearby. Failure to follow these instructions may damage unit and void the warranty.

**WARNING:** Describes precautions that should be observed in order to prevent injury to the user during installation

**CAUTION:** Describes precautions that should be observed in order to prevent damage to the unit or its components, which may occur during installation or unit operation if proper care is not exercised.

**NOTE:** Provides additional information that facilitates unit operation.

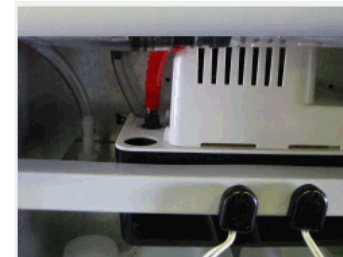
**WARNING:** To reduce risk of fire or electric shock do not expose unit to rain or moisture. Do not open cabinet while unit is connected to a power source. Dangerous voltage is present. Have repairs performed by certified HVAC technicians.

## REMOVING THE CONDENSATE *continued*

### Automatic Condensate Draining

If it is necessary to operate the COOLIT2600 continually without threat of automatic shut-off and loss of cooling when tanks are full, you will need to utilize the automatic condensate pump option. Selecting the automatic condensate pump method is a snap.

1. Open the front door of the COOLIT2600. Remove the tanks. Locate the condensate pump.
2. Locate the red vinyl tube attached to the condensate pump.
3. Disconnect the red vinyl tube at the barbed connector to the condensate pump.



Connect the vinyl tube (8' provided) to barbed fitting of the condensate pump. Direct the other end of the tubing through the unit (plug between the tanks on the base of the unit) to your drain connection.

4. Depending on the length of your drain line, you may need to add more tubing or soft copper tubing depending on the building codes in your area. Tubing provided is 3/8" ID. The condensate pump in your COOLIT2600 has a 15' lift capability. If lift capability is exceeded, the pump will not work and the unit will shut-down.

**CAUTION:** The condensate drain line installation must comply with your local building codes. Consult local building codes before installing the condensate line.

**NOTE:** Condensate pump and drain installation and maintenance instructions specific to your equipment are included with this manual.

## REMOVING THE CONDENSATE

**Unequaled Versatility** AirPac's patent-pending condensate removal system is the best in the industry. During cooling operations and when humidity conditions are above 50%, condensate is generated and must be removed from the unit. Our condensate removal system is selectable in the field and can be changed as your needs require. You can select from the following three methods:

**TANK**—Condensate is collected into the tanks. When the tanks are full the water must be emptied.

**AUTOMATIC**—Condensate is pumped from the pump reservoir through a vinyl tube out of the unit to a drain.

**GRAVITY**—Condensate drains from the unit by flow of gravity to a drain outside of unit.

### Manual Tank Draining

The condensate pump is an operational component in the condensate drain system whether you select to use the manual tank draining system or automatic removal method.

The COOLIT2600 leaves the factory ready for manual tank draining.

1. The dual tanks will fill up at approximately the same rate. When the dual 2.5 gallon condensate tanks are full, the TANK FULL alarm will flicker and an audible alarm will beep. Open the front door and remove the plug from the socket for each condensate tank.
2. Empty the tanks and replace the tanks and plugs back into sockets. If the plug won't reach, rotate the tank; they only fit one way.
3. Close and latch the door. The tank full alarm should clear.

You may find that your COOLIT2600 continues to operate while you are emptying the condensate tanks. This is normal. When the condensate pump reservoir reaches the full level, power to the compressor and fans shut off so condensate does not overflow.

**NOTE:** TANK FULL alarm. Flickers and beeps on any of these conditions: front door open—not latched; tank(s) full; tank plug not in place; or condensate pump emergency shut off (fans and compressor are disabled).

## INSTALLING COOLIT2600

### Set up Your COOLIT

1. *Remove COOLIT packaging.*

Unpack and inspect the unit for visible shipping damage. If you find shipping damage, DO NOT OPERATE THE UNIT. Keep all packaging.

**CAUTION:** If using an extension cord: extension cord must be rated at least 15 amps, at 120 volts and have a grounding type attachment plug connector (load fitting).

2. *Remove COOLIT from skid.*

The COOLIT is immobilized on the skid by straps and two wooden rails. Cut the straps and slide the COOLIT to the side to remove the unit from the skid.

3. *Place the unit on a flat, solid surface.*

Operation on uneven surfaces may cause vibration, noise and possible water leakage from condensate system.

4. *Check that the condensate water tanks are in place and properly seated.*

If the condensate tank is not installed properly the unit will not operate. The COOLIT has a unique condensate removal system that is integral to the unit. Refer to the *Automatic Condensate Draining* section on page 13 to use this feature.

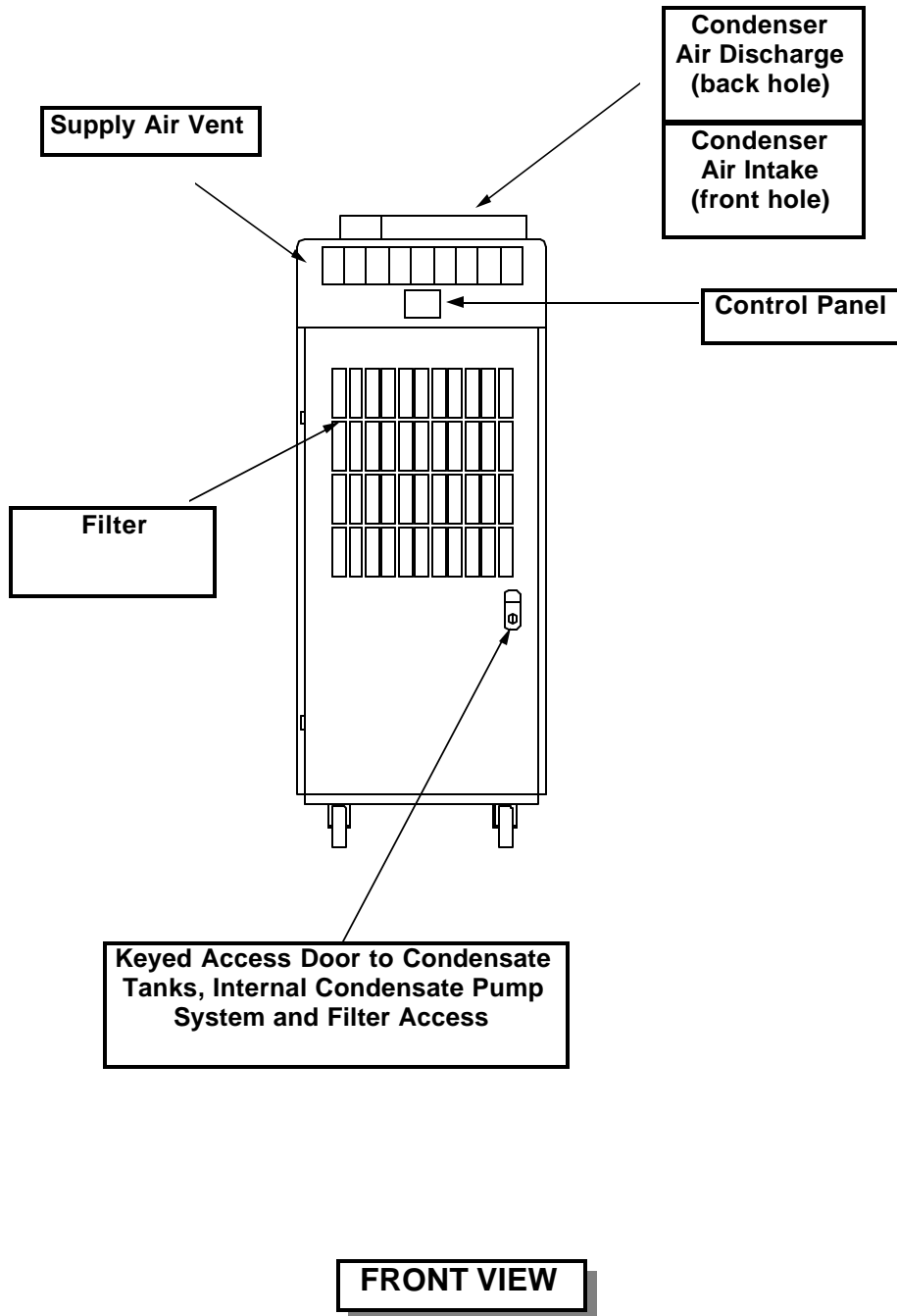
### Check out Your COOLIT

### Power Your COOLIT

5. *Plug COOLIT unit into a NEMA 5-15 outlet.*

Remove cord from cord storage area. Plug unit directly into the appropriate wall outlet. Do not plug COOLIT into extension cord. When power is applied to the unit, the LED display will read "OFF". There will be a small LED light coming from above the power cord access panel to indicate voltage is being applied to the unit.

## UNIT OVERVIEW—COOLIT 2600



## AIR DISCHARGE COOLIT 2600



*Place Ceiling Adapter into the ceiling grid.*



*Extend duct and fit collar into opening.*

AirPac's unique patent-pending air discharge design is integral to the COOLIT2600 and requires no assembly. The duct section compresses into the cabinet. The integral ducting system is typically used to vent exhaust (condenser) air into the ceiling plenum or out a window panel.

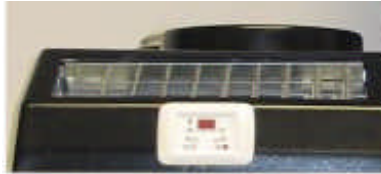
- The Ceiling Panel stores on the side of the unit. The Ceiling Panel will replace a 24" x 24" drop ceiling tile and is convenient for temporary and emergency installations requiring exhaust into a ceiling plenum. Check with local building codes to see if your building will accept this type of venting.
- Move a ceiling tile out of the grid and replace it with the COOLIT Ceiling Panel. Make sure the ceiling panel is positioned properly in the ceiling grid and cannot fall out. There should be at least 18 - 24" of open space above the ceiling panel outlet so exhaust air is not blocked.
- Slowly lift the warm air duct from the top of the unit. Press in on both sides of the tension spring and fit the collar into the Ceiling Panel. Once the hooks of the spring are above the Ceiling Panel release the tension spring. The collar and duct should stay up in place.

### **COOLIT 2600 and 2900 users**

Follow instructions provided with Condenser Air Make-up Plenum and Condenser Air Window Kit .

## AIR DISCHARGE

**Distributing air on the COOLIT 2600** The COOLIT2600 distributes cool air through a louvered discharge mounted on top the unit. The vertical blades oscillate whenever power is applied to the unit.

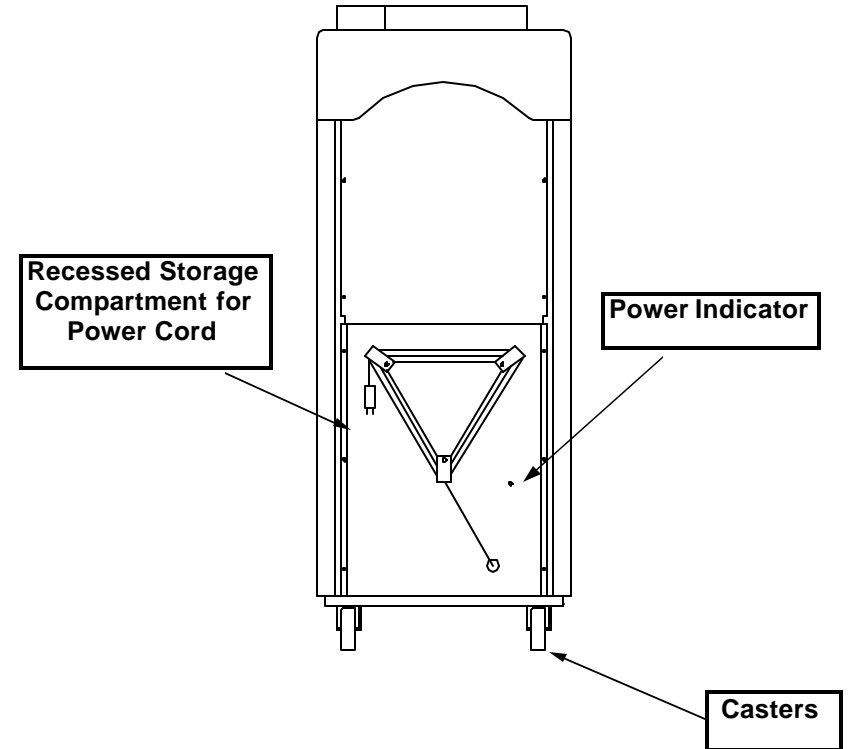


**Ducting Warm air on the COOLIT 2600** Warm air exhausts from the top back hole of the unit when operating in cooling mode as an air conditioner. The COOLIT2600 will cool more efficiently if the warm air is removed from the area.

### CAUTION:

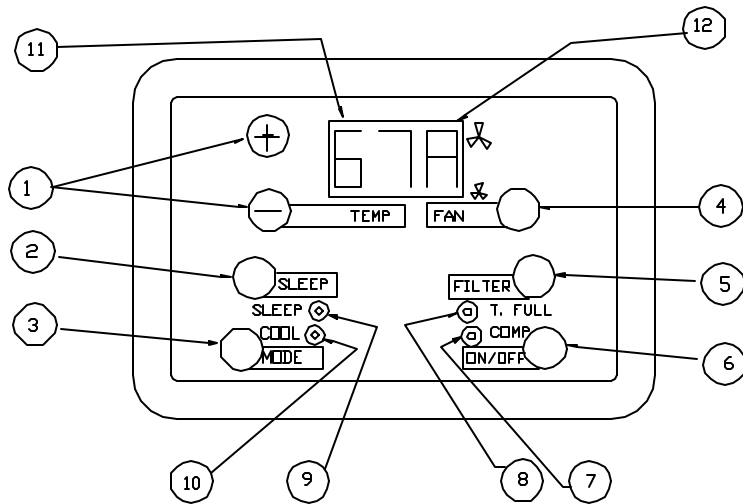
When using flexible duct . Flexible duct is convenient and typically has a high compression ratio, however it can also greatly restrict air flow when improperly sized or installed. Observe all warnings and instructions when using flexible duct. If air flow is restricted possible effects are automatic shut or damage to your system.

## UNIT OVERVIEW—COOLIT 2600



REAR VIEW

## CONTROL PANEL FUNCTIONS



1. **(TEMP)** Push-buttons to set desired temperature, (+) for set point higher and (-) for set point lower. Range is 60° to 85°F. Continuous pressing of 2 push buttons simultaneously for instant display of ambient (return) air temperature. While display is blinking by pressing the (+) button once to read the condenser coil temp (does not display leading "1"). Press the (+) again to read the evaporator coil temp. Display will return to normal after blinking stops.
2. **(SLEEP)** Push button to start sleep program. Timer that will raise the set point temperature by 4°F after two hours. After 8 hours, the normal set point temperature setting will resume.
3. **(MODE)** Push button to select operation mode: Cool, Dry, Ventilation (fan only)
4. **(FAN)** Push button to select fan speed: Low, High, Automatic mode
5. **(FILTER)** Push button resets operation timer to zero. "FIL" appears in display after 250 hours of operation time. A reminder to clean or change your filter.
6. **(ON/OFF)** Push button for complete start and stop of the system
7. **LED—Compressor:** Steady light when compressor is on, flickering indicate 3.5 minute count down to compressor start up.
8. **LED—Tank Full:** Alarm. Flickers and beeps on any of these conditions: front door open or not latched; tank(s) full; tank plug not in place; or condensate pump emergency shut off (fans and compressor are disabled). If unit is running, clear fault. If unit is not running, turn unit off, clear fault, and restart for normal operation.

## CONTROL PANEL FUNCTIONS

**Control Panel** 9. **LED—Sleep:** Steady light when Sleep program is selected.

10. **LED-COOL :** Steady light when COOLING mode is selected by pressing the MODE button. Flickering indicates timer program activated by remote control (optional).

11. **LED —Display:** Left and center digit displays desired temperature or operational temperatures when flickering.

12. **LED—Display:** Right digit displays indoor fan status. Low line for low speed, high line for high speed. "A" in display means alternating fan speed according to the temperature.

Additional displays and features:

\_\_F— Ventilation mode selected. Left digit "F" is displayed.

D\_\_ - Drying mode selected. Right digit "D" is displayed.

ER1—communication failure between controller and board

ER2—Short or open circuit of the room sensor

ER3—short or open circuit of either coil sensor

FIL—Reminder to clean or change filters every 250 hours

OFF—System off. Ready for input.

BLANK—No power to system board or controller.

Board and controller are connected with a 6 wire telephone cable. Control panel can be mounted remote up to 50m. Do not cross wires or connectors in telephone cable. Do not disconnect controller from cable without disconnecting power. Memory at power failure or shut down—Restarts system at latest operating mode and set points.

Drying Mode Operation—To reduce humidity. If temperature is above set point temperature: compressor operate continuously. If temperature is at requested temperature: Compressor operates in 8 minutes ON and 4 minutes OFF cycles. If temperature is below set point—compressor cycles 6 minutes on, 6 minutes off. Inside fan at low speed On and Off at 30 second delays .